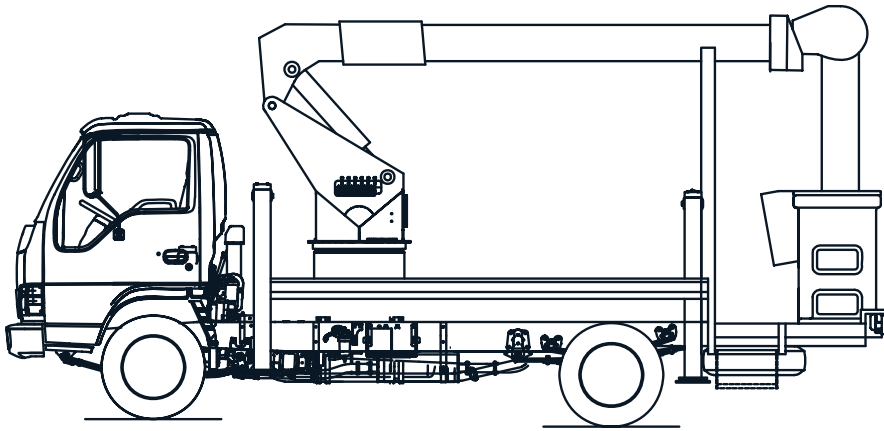




ELEVATING WORK PLATFORMS

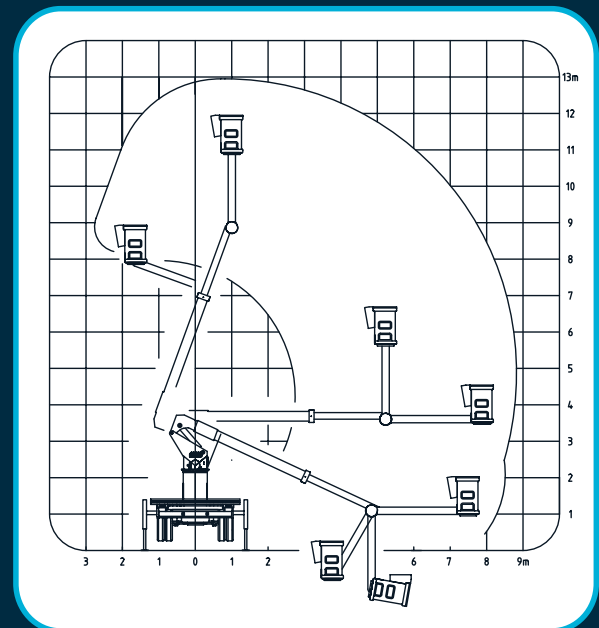


NL122TF

NL122TF

Working Height	13.0m*
Basket Floor to Ground	11.0m*
Rated Capacity	180kg
Maximum Reach	8.9 m
Distance to Front Basket	8.2 m
Fly Travel	180°
Basket rotation	90°

* (Depending on truck chassis height)



t + 61 3 9725 0077
f + 61 3 9725 0044
sales@nifty-lift.com.au

www.nifty-lift.com.au

NL1 22TF

Elevating Work Platform Specification

Type

Telescopic boom, with 270° rotating fly boom and rotating basket.
Hydromechanical basket levelling system, with emergency tilt facility.
Capable of continuous rotation in either direction.

Suitable Vehicles

Minimum 7.5 tonne GVM, depending on required payload and stability requirements. Suitable for 4x2 and 4x4 chassis.

Platform Height

1.3m nominal working height. 1.1m nominal basket floor height (depending on truck chassis height).

Telescopic Extension

1.4m

Travelling Height

3.6m on average 7.5 tonne GVM chassis (variable with customer requirements).

Radius of Operation

8.2m to outside edge of basket at 3.7m nominal basket floor height.
Maximum reach 8.9m.

Rated Capacity

180kg standard depending on options fitted, chassis GVM, and type of stabilisation.

Mounting Orientation

Standard (basket to rear of tray) or Reverse (basket behind truck cab) available.

Zero Tail Swing

Standard.

Fly Boom

Capable of 180° travel at all lower boom positions.

Slewing

Ball bearing slew ring, hydraulic and electric swivel couplings offered as standard equipment, offering 360

degree continuous slew. Automatic spring applied, hydraulically released slew brake standard.

Main Frame

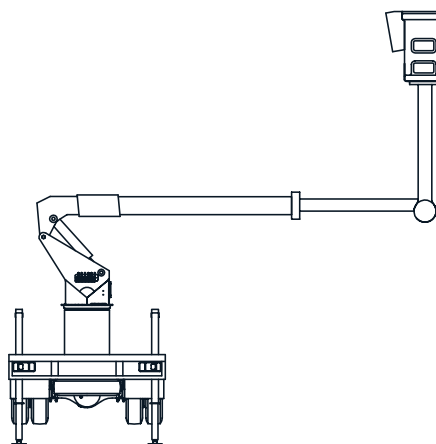
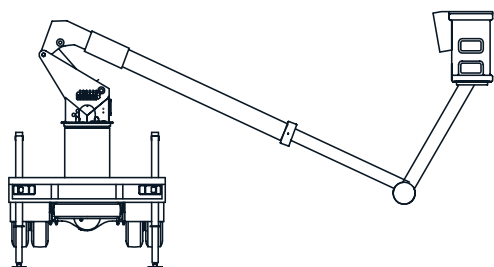
Constructed from high tensile steel tubing to form a rigid base for the platform and stabiliser attachment points.

Stabilisation

Two pair of vertical hydraulic stabiliser legs with self aligning foot pads standard. Capable of lifting the full GVM of the truck. Approx. 400mm ground penetration.
Optional suspension lockout system.

Tray body

Heavy duty aluminium tray body as standard. Steel chequer plate tray body optional. Tray access and basket access handrails standard. Pedestal and truck gearbox inspection access standard.



Controls

Non-insulated, low voltage insulated fitted with proportional electric. High voltage insulated platforms with radio remote controls. Dual radio remote control available.

Emergency

Emergency base controls are provided at the turret. These controls can be used in conjunction with PTO/pump or optional emergency electric power pack. Emergency hand pump standard.

Basket

Basket sizes 900 x 600 or optional 1200 x 700 (inside) x 1000 high. Constructed from fire retardant FRP with UHMWPE protective handrail for insulated platforms. Steel basket and handrail construction for non-insulated platforms. Safety harness anchors fitted. Heavy duty vinyl basket covers available for FRP baskets. Controlled descent devices optional.

Basket Slew

Basket capable of 90° rotation.

Insulation

Optional Low Voltage or High Voltage insulation complying with Australian Crane Code AS1418.10. High Voltage version includes 33kV FRP chassis insulator and 66kV basket insulator.

Electrical Testing & Insignia

In accordance with AS1418.10.

Hydraulic System

Motion of each boom and slew is independently hydraulically controllable. Proportional main control valve. PTO/pump or optional auxiliary engine power. Main hydraulic tank (100 litre) incorporates a drain cock and isolating ball valve to facilitate maintenance, and a level/temperature gauge. Pressure gauge to system. All cylinders are double acting. Open circuit hydraulic system. All cylinders and slew motor fitted with holding valves. Manual bleed down to lift cylinders optional. Optional hydraulic tool circuit with outlets to basket and/or tray.

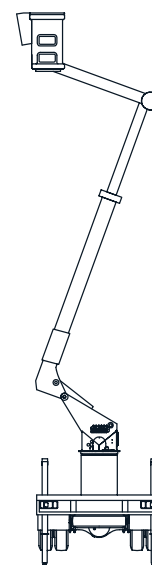
Electrics

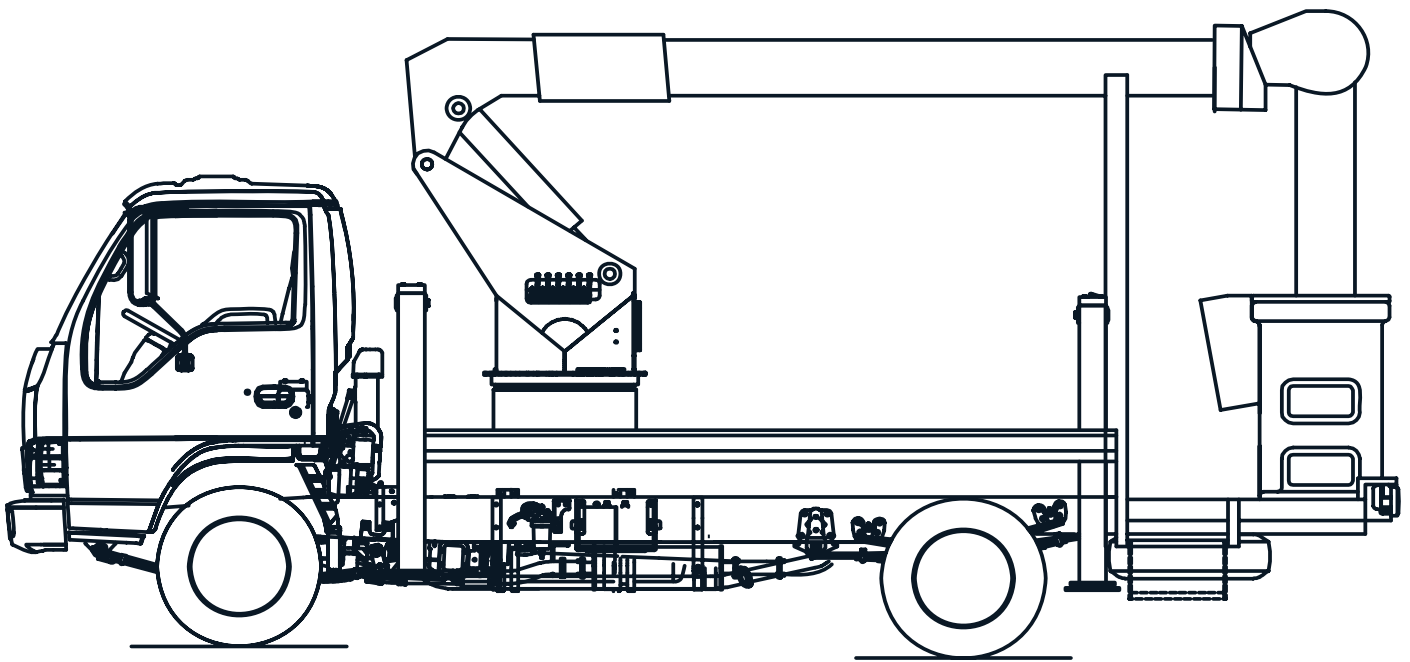
12V or 24V electrical system depending on cab chassis. PLC control. Auxilliary batteries and charge systems available.

Interlocks

Boom and stabiliser legs interlocked to prevent operation of boom without stabilisers engaged, and prevent operation of stabilisers when boom lifted.

Optional interlocks- limited slew, basket and boom tie downs, 'Out of level' shutdown.





Warning Indicators

System On, PTO Engaged, Boom 'not stowed', Stabilisers 'not stowed', standard.

Stabiliser Ground Sense, Access Steps 'not stowed', Locker Door Open, Radio Remote Active, Hydraulic Tools Active, High pressure and return filters clogged, Vice 'not stowed', 'Out of level', all available.

Level Indicators

Camber indicators standard. 'Out of level' alarm and interlock available.

Painting

All metal surfaces abrasion blasted and prime coated. All metal surfaces painted with two pack spray paint system or powder coated. High voltage FRP inserts flow coated and polished. Standard colour: White.

Manuals

Two copies of operation, spare parts, and repair manuals supplied standard. Additional hard or soft copies available.

Testing

All platforms are tested in accordance with AS1418.10 before release from factory, and test certificate/s issued.

Accessories

Numerous optional accessories can be supplied. See separate options information.

Spare Parts

Full range of spare parts available.

Model Details

- NL122TF-NI (Non insulated)
- NL122TF-LV (Low Voltage insulation)
- NL122TF-HV (66kV/33kV/LV insulation)

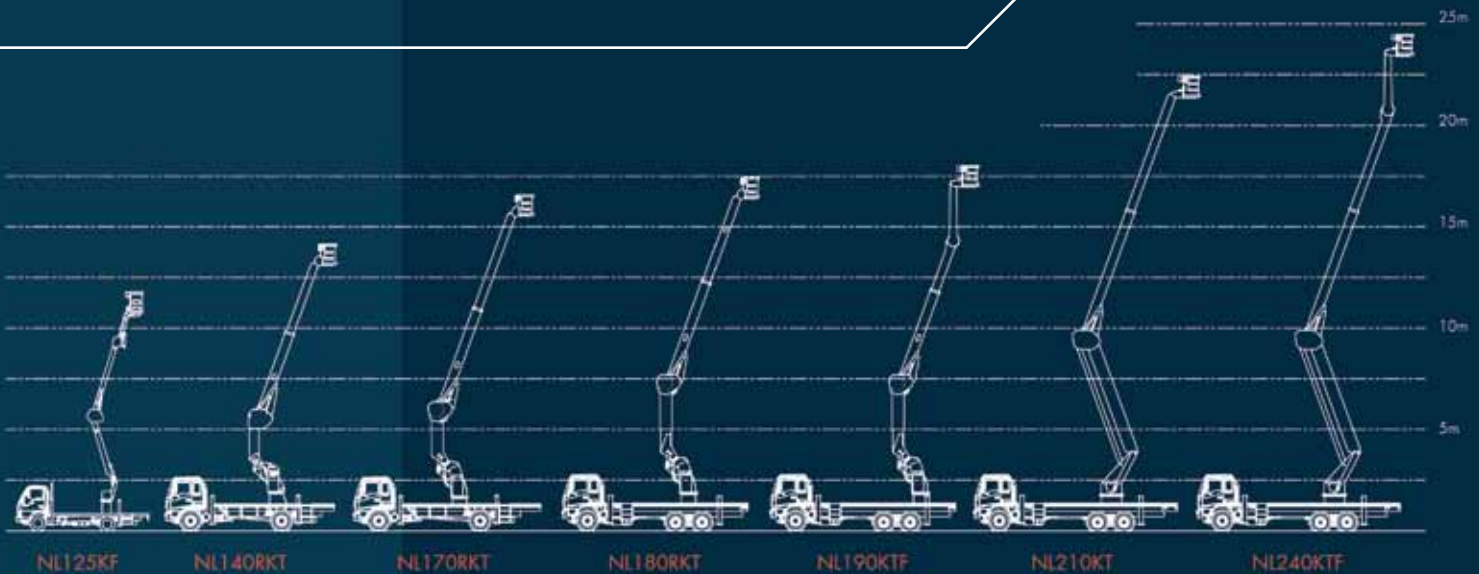
NiftyLift reserve the right to alter specifications without notice.



**ELEVATING
WORK PLATFORMS**

www.nifty-lift.com.au

Don't forget to check out the rest
of the Nifty-Lift range!



Boucher & Boucher Pty Ltd T/A

NIFTY-LIFT

ABN 32 050 197 218

t + 61 3 9725 0077
f + 61 3 9725 0044

42B Orchard Street Kilsyth Vic. 3137
P.O. Box 481 Kilsyth Vic. 3137

sales@nifty-lift.com.au
www.nifty-lift.com.au